



Clipsal Combination Antennas

Combination VHF/UHF Antennas



**When it comes to antenna installation,
the choice is clear.**



Clipsal Antennas - Making Antenna Installation Easy

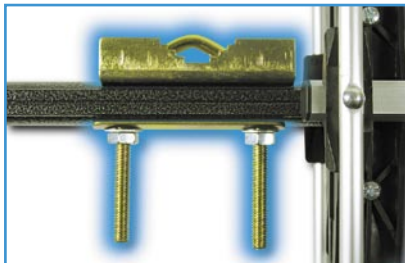
Clipsal have engineered an antenna range that is easy to install and offers high performance. All Clipsal antennas are digital ready and analogue compatible, ensuring that your television requirements are covered for today and tomorrow.

The Clipsal Combination Antenna Range has been designed with you, the installer, in mind. Clipsal are making your job easier by providing you with a product that can simply be taken out of the pack and installed with minimal assembly. This saves you time and money where it counts the most, on-site. Clipsal have also made the antenna safe to install by crimping and machining all ends of the elements and directors, drastically minimising the possibility of cuts and scratches.

The Clipsal Difference

Snap Out Reflectors

- These snap out reflectors just fold out and click into place
- This reduces the time taken to assemble the antenna
- The frustration of losing nuts and bolts for the assembly of reflectors is a thing of the past.



U-Bolt Mounting

The U-Bolt mounting is assembled, allowing for quick and easy installation of your Clipsal antenna.

Crimped and Machined Ends

The crimped and machined end of all elements and directors makes installing the Clipsal Combination Antenna a painless experience - reduces the chances of annoying cuts and scratches.



High Performance F-Type PCB Balun



- The High performance F-Type PCB balun ensures a quality connection is made first time every time
- F-Type connections offer far superior screening to that of screw and saddle
- Connection faces down to minimise any chance of the ingress of water.

Heavy Duty Construction

- Tough powder coated finish and UV Stabilised Plastics to withstand the harsh Australian Climate
- Bifurcated Rivets for the strongest connection
- 12mm Aluminium Tube for Elements
- Stainless Steel connection screws for use near the coast.



Clipsal Antennas - High Performance Models

2ANCOM3

13 Element

VHF 1-12 UHF 28-50

For use in **PRIME** signal reception areas.

This Antenna will suit areas such as **Adelaide, Melbourne, Sydney, Brisbane, Perth, Hobart and Launceston.**



PRIME

2ANCOM4

17 Element

VHF 2-12 UHF 28-40

For use in **FRINGE** signal reception areas.

This Antenna will suit areas such as **Adelaide, Melbourne, Sydney, Brisbane, Perth, Hobart and Launceston.**



FRINGE

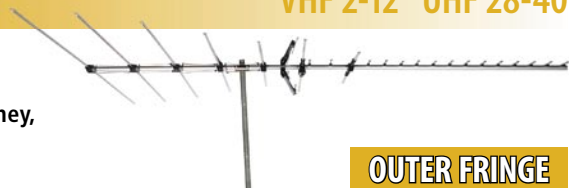
2ANCOM6

28 Element

VHF 2-12 UHF 28-40

For use in **OUTER FRINGE** signal reception areas.

This Antenna will suit areas such as **Adelaide, Melbourne, Sydney, Brisbane, Perth, Hobart and Launceston.**



OUTER FRINGE

2ANCOMD14

14 Element

VHF 6-12 UHF 28-50

For use in **PRIME/FRINGE** signal reception areas.

This antenna will suit both Digital and Analogue signals from **VHF 6-12 and UHF 28-50.**



PRIME/FRINGE

2ANCOMD14WB

14 Element - Wide Band

VHF 6-12 UHF 28-69

For use in **PRIME/FRINGE** signal reception areas.

This antenna will suit both Digital and Analogue signals from **VHF 6-12 and UHF 28-69.**



PRIME/FRINGE

2ANCOMD24

24 Element

VHF 6-12 UHF 28-50

For use in **FRINGE** signal reception areas.

This antenna will suit both Digital and Analogue signals from **VHF 6-12 and UHF 28-50.**



FRINGE



Clipsal Antennas - Economy Models

2ANCOMA13

13 Element

VHF 2-12 UHF 28-36

For use in **PRIME** signal reception areas where minimal gain is required.

This Antenna will suit areas such as **Adelaide, Melbourne, Sydney, Brisbane, Perth, Hobart and Launceston.**

Includes a **ferrite F-Type balun.**



PRIME

2ANCOMA17

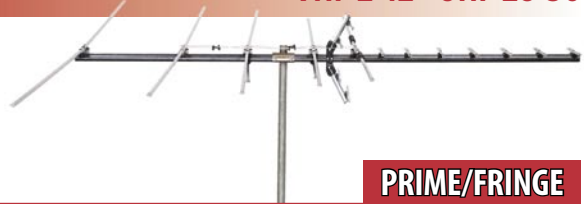
17 Element

VHF 2-12 UHF 28-36

For use in **PRIME/FRINGE** signal reception areas.

This Antenna will suit areas such as **Adelaide, Melbourne, Sydney, Brisbane, Perth, Hobart and Launceston.**

Includes a **ferrite F-Type balun.**



PRIME/FRINGE

2ANVULP2

32 Element

VHF 6-12 UHF 28-69

For use in **PRIME/FRINGE** signal reception areas.

Includes an **F-Type connection.**



PRIME/FRINGE

ANTENNA TECHNICAL DATA GUIDE

ANTENNA	VHF			UHF			RECEPTION
	CHANNELS	GAIN	F/B RATIO	CHANNELS	GAIN	F/B RATIO	
2ANCOM3	1-12	8db	>12db	28-50	12db	>14db	PRIME
2ANCOM4	2-12	9db	>12db	28-40	12db	>14db	FRINGE
2ANCOM6	2-12	10db	>16db	28-40	15db	>16db	OUTER FRINGE
2ANCOMD14	6-12	7.5db	>16db	28-50	12db	>16db	PRIME/FRINGE
2ANCOMD14WB	6-12	7.5db	>16db	28-69	12db	>16db	PRIME/FRINGE
2ANCOMD24	6-12	8db	>16db	28-50	15db	>16db	FRINGE
2ANCOM13	2-12	5db	>8db	28-36	7.5db	>20db	PRIME
2ANCOMA17	2-12	6db	>10db	28-36	10db	>20db	PRIME/FRINGE
2ANVULP2	6-12	8db	>20db	28-69	11db	>20db	PRIME/FRINGE

► **For further information call 1800 728 728** ◀

Product of Clipsal Australia Pty Ltd
ABN 27 007 873 529

Head Office
12 Park Terrace, Bowden
South Australia 5007
Telephone (08) 8269 0511
Facsimile (08) 8340 1724
Internet clipsal.com
E-Mail plugin@clipsal.com.au

National Customer Service Enquiries:
1300 2025 25

National Customer Service Facsimile:
1300 2025 56

International Enquiries
International Sales and Marketing
Telephone + 61 8 8269 0587
Facsimile + 61 8 8340 7350
E-Mail export@clipsal.com.au

New Zealand
Clipsal Industries (NZ) Ltd
Telephone (09) 576 3403
Facsimile (09) 576 1015
E-Mail headoffice@clipsal.co.nz

Customer Service
Free Fax (0508) 250 305
Auckland/Mobile Phone (09) 572 0014
Free Phone (0508) CLIPSAL
2 5 4 7 7 2 5

You can find this brochure and many others online in PDF format at: clipsal.com
Follow the links off the home page or access the following page directly:
clipsal.com/wat_lib_pdf.cfm

clipsal.com

Clipsal Australia Pty Ltd reserves the right to change specifications, modify designs and discontinue items without incurring obligation and whilst every effort is made to ensure that descriptions, specifications and other information in this catalogue are correct, no warranty is given in respect thereof and the company shall not be liable for any error therein.

©Copyright Clipsal Australia Pty Ltd 2006.
All rights reserved.